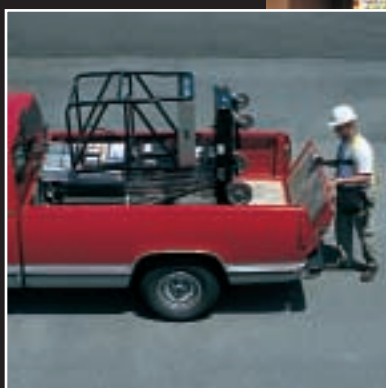
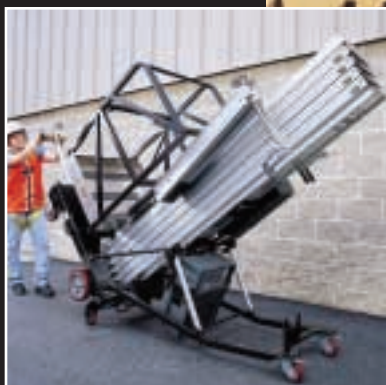


AccessMaster™

PUSH-AROUND PERSONNEL LIFTS



**15AM, 19AM,
20AM, 25AM,
30AM, 36AM,
41AM**



The logo for JLG, consisting of the letters 'J', 'L', and 'G' in a stylized, bold, orange font. The 'J' and 'L' are connected, and the 'G' is separate. A registered trademark symbol (®) is located at the bottom right of the 'G'.



30AM

Designed For Value and Performance

JLG takes the personnel lift industry to new heights with AccessMaster™ push-around personnel lifts. You'll enjoy greater productivity with the highest capacities in the industry and the ability to get closer to your work area. Plus, with a mast guide system that requires no lubrication, a broad family of quick-change platforms, a unique power management system and the convenience of the AMI Series outriggerless lifts – AccessMaster push-around lifts provide a whole new level of value and performance.

A Broad Family Offering for Improved Productivity

JLG's AccessMaster personnel lifts are available in seven different models, with platform heights ranging from 15 to 41 feet (4.60 to 12.40 m). AccessMaster lifts are ideal for a broad range of worksite requirements — from industrial and maintenance applications, to entertainment and institutional usage.



Stronger Anodized Mast

Every AccessMaster lift features an anodized mast that is more rigid for less deflection and sway. The mast guide system requires no lubrication for the life of the machine.



Improved Maneuverability and Transport

JLG's six-wheel design gives the AM Series Lifts enhanced maneuverability, while the 10 in. (25 cm) wheels provide ease of movement. Models with heights up to 30 ft. (9.14 m) roll through standard doorways and into elevators without tilt back, and have an overall length of 47 in. (1.19 m) for transport in cargo vans or small elevators. All AM models have six-inch-wide (15 cm) fork pockets that allow for convenient loading, and can be loaded on standard size pickup trucks. Plus, new mid-ship tie down points are easier to reach and provide improved protection from chain damage.



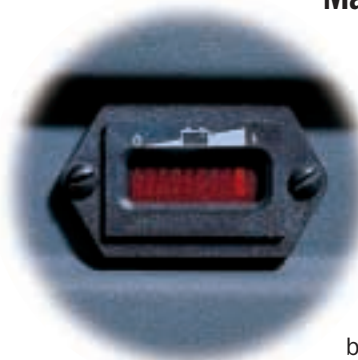
Quick-Change Platforms



JLG offers a family of quick-change platforms that can be changed in less than one minute without tools, to suit your specific application needs. Choose from our standard slide rail side entry platform measuring 25.5 x 26 in. (65 x 66 cm), an optional oversized gull-wing entry platform measuring 26 x 28 in. (66 x 71 cm), an optional narrow gull-wing entry platform measuring 24.5 x 22 in. (62 x 56 cm), or an optional step-in molded swing-up entry platform measuring 26 x 26 in. (66 x 66 cm). Also available for the AMI Series Models only is an optional gull-wing front entry extension platform measuring 26 x 26 in. retracted; 49 x 26 in. extended. All rail heights are 43-1/4 in. (1.09 m). Rail Height of 43-1/4 in. meets OSHA standards.

DC Model Power Management System

The AccessMaster DC Model lifts' battery mount provides ease of access to the battery and includes a constant display battery discharge indicator (BDI) of the charge status of the battery. JLG's automatic battery charger takes the guesswork out of the charging times, and protects from overcharging and possible battery damage. Plus, with our unique automatic power-off system, you'll be able to avoid unnecessary battery drain and achieve optimum battery life.



FEATURES AND SPECIFICATIONS

Standard Features

Low Maintenance Anodized Mast
 110 Volt Double Receptacle on Platform
 Auto Power Saver — Shuts Off Power when Idle
 Battery Discharge Indicator (BDI) – DC Models only
 Lanyard Attachment Anchor for Fall Protection Systems
 Non-Marking Tires
 Quick-Change Platform Mounts
 Quick-Change 25.5 x 26 in. (65 x 66 cm)
 Slide Rail Side or Front Entry Platform
 Automatic Battery Charger – DC Models only
 Roller Loading Device for Loading on Standard Size Pickup Trucks — AM Models Only
 Tilt Back, on 36AM & 41AM only
 JLG “1 & 5” Warranty

Available Options

Oversized Quick-Change 26 x 28 in. (66 x 71 cm) Gull-Wing Front Entry Platform
 Narrow Quick-Change 24.5 x 22 in. (62 x 56 cm) Gull-Wing Front Entry Platform
 Molded Quick-Change 26 x 26 in. (66 x 66 cm) Swing-Up Gate Side Entry Platform
 Material Tray: 26" W x 26" L x 5" D (With Molded Platform Only)
 Extension Quick-Change Platform (AM Models only)
 26 x 26 in. Retracted; 49 x 26 in. Extended, Gull-Wing Front Entry
 18 x 8 in. Tool Tray — 5 in. Deep
 Fluorescent Light Tube Caddy
 Straddle Kit — AM Models Only
 Straddle Ladder for Straddle Kit
 Straddle Outrigger Interlock Adapter
 Crane Hook — Lifting Eye for a Crane Hook
 Auxiliary Emergency Lowering Control
 Laser Locator (Light Beam for Lift Positioning)
 Extra Power Pack – DC Models Only
 Descent Alarm
 Flashing Amber Beacon
 Model 15AMI Clean Room Option
 High Performance Sealed Battery and 5 hr. Charger
 Cord Retractor for Charging and AC to the Platform
 Cord Reel
 Security Lock
 High Performance Battery and 5 Hr. Charger Pack – DC Models Only
 Hourmeter

Clean Room Option – 15 AMI – AC Models Only

The JLG “1 & 5” Warranty

JLG Industries, Inc. backs our products with our exclusive “1 & 5” Warranty. We provide coverage on all products for one (1) full year, and cover all specified major structural components for five (5) years. Due to continuous product improvements, we reserve the right to make specification and/or equipment changes without prior notification. This machine meets or exceeds applicable OSHA Regulations in 29 CFR 1910.67, 29 CFR 1926.453, ANSI A92.3-1990, as originally manufactured for intended applications.

	15AMI	19AMI	20AM	25AM	30AM	36AM	41AM
Working Height	21 ft. (6.40 m)	25 ft. (7.62 m)	26 ft. (7.92 m)	31 ft. (9.45 m)	36 ft. (11.0 m)	42 ft. (12.80 m)	47 ft. (14.33 m)
Platform Height	15 ft. (4.57 m)	19 ft. 4 in. (5.89 m)	20 ft. 5 in. (6.09 m)	25 ft. 2 in. (7.62 m)	29 ft. 10 in. (9.14 m)	36 ft. 3 in. (11.05 m)	40 ft. 9 in. (12.42 m)
Platform Capacity	350 lbs. (160 kg)	350 lbs. (160 kg)	350 lbs. (160 kg)	350 lbs. (160 kg)	350 lbs. (160 kg)	300 lbs. (135 kg)	300 lbs. (135 kg)
Overall Height – Stowed	77.5 in. (2.0 m)	78 in. (1.98 m)	77.5 in. (2.0 m)	77.5 in. (2.0 m)	77.5 in. (2.0 m)	104 in. (2.64 m)	104 in. (2.64 m)
Overall Base Width – Stowed	29 in. (74 cm)	34 in. (86 cm)	29 in. (74 cm)	29 in. (74 cm)	29 in. (74 cm)	29 in. (74 cm)	29 in. (74 cm)
Overall Length – Stowed	52.5 in. (1.33 m)	53.5 in. (1.35 m)	47 in. (1.19 m)	49 in. (1.24 m)	52 in. (1.32 m)	54.5 in. (1.38 m)	57.5 in. (1.46 m)
Overall Base Length – Without Platform	52.5 in. (1.33 m)	52.5 in. (1.33 m)	47 in. (1.19 m)	47 in. (1.19 m)	47 in. (1.19 m)	53 in. (1.35 m)	53 in. (1.35 m)
Overall Height – Tilted Back	n/a	n/a	n/a	n/a	n/a	76.5 in. (1.94 m)	79 in. (2.0 m)
Overall Length – Tilted Back	n/a	n/a	n/a	n/a	n/a	108 in. (2.74 m)	108 in. (2.74 m)
Ground Entry Height	19 in. (48 cm)	17.5 in. (44 cm)	19 in. (48 cm)	19 in. (48 cm)	19 in. (48 cm)	19 in. (48 cm)	19 in. (48 cm)
Outrigger Footprint Length	n/a	n/a	62 in. (1.57 m)	62 in. (1.57 m)	68 in. (1.73 m)	79 in. (2.01 m)	79 in. (2.01 m)
Outrigger Footprint Length – CSA	n/a	n/a	79 in. (2.01 m)	79 in. (2.01 m)	93 in. (2.36 m)	108 in. (2.74 m)	108 in. (2.74 m)
Outrigger Footprint Width	n/a	n/a	53 in. (1.35 m)	53 in. (1.35 m)	61 in. (1.55 m)	79 in. (2.01 m)	79 in. (2.01 m)
Outrigger Footprint Width – CSA	n/a	n/a	79 in. (2.01 m)	79 in. (2.01 m)	98 in. (2.36 m)	119 in. (3.02 m)	119 in. (3.02 m)
Platform to Wall – Front	0 in.	0 in.	8 in. (20 cm)	5 in. (13 cm)	5 in. (13 cm)	14 in. (35 cm)	11 in. (28 cm)
Platform to Wall – Front – CSA	n/a	0 in.	17 in. (43 cm)	14 in. (36 cm)	18 in. (46 cm)	28 in. (71 cm)	26 in. (66 cm)
Platform to Wall – Side	1.5 in. (4 cm)	4 in. (10 cm)	13 in. (33 cm)	13 in. (33 cm)	18 in. (46 cm)	26 in. (66 cm)	26 in. (66 cm)
Platform to Wall – Side – CSA	n/a	4 in. (10 cm)	26 in. (66 cm)	26 in. (66 cm)	37 in. (94 cm)	46 in. (117 cm)	46 in. (117 cm)
Gross Vehicle Weight – AC	820 lbs. (373 kg)	n/a	740 lbs. (336 kg)	825 lbs. (374 kg)	890 lbs. (404 kg)	1060 lbs. (481 kg*)	1100 lbs. (499 kg [†])
Gross Vehicle Weight – DC	910 lbs. (414 kg)	1130 lbs. (513 kg)	860 lbs. (390 kg)	905 lbs. (410 kg)	940 lbs. (426 kg)	1160 lbs. (526 kg**)	1230 lbs. (558 kg ^{††})

* for CSA add 170 lbs. (77 kg); ** for CSA add 125 lbs. (57 kg); † for CSA add 215 lbs. (98 kg); †† for CSA add 145 lbs. (66 kg)

**Badger Industrial
 Supply & Equipment, LLC**
 Eau Claire, WI 54703
 Telephone 715-831-7046
 Toll-Free in US 1-800-748-9646
 Fax 715-839-8647
 www.BadgerIE.com

